

Crystal Products CPD breathers

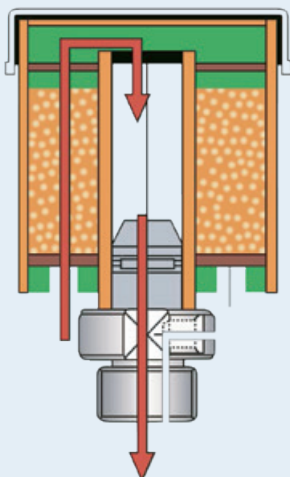
Hygroscopic tank breather

Crystal Products breathers are designed to protect fluids. Hygroscopic fluids benefit instantly by making sure no dirt and moisture from outside can enter. High quality air breathers from Crystal Products ensure fluid protection, protects against corrosion and helps in lowering related maintenance costs.

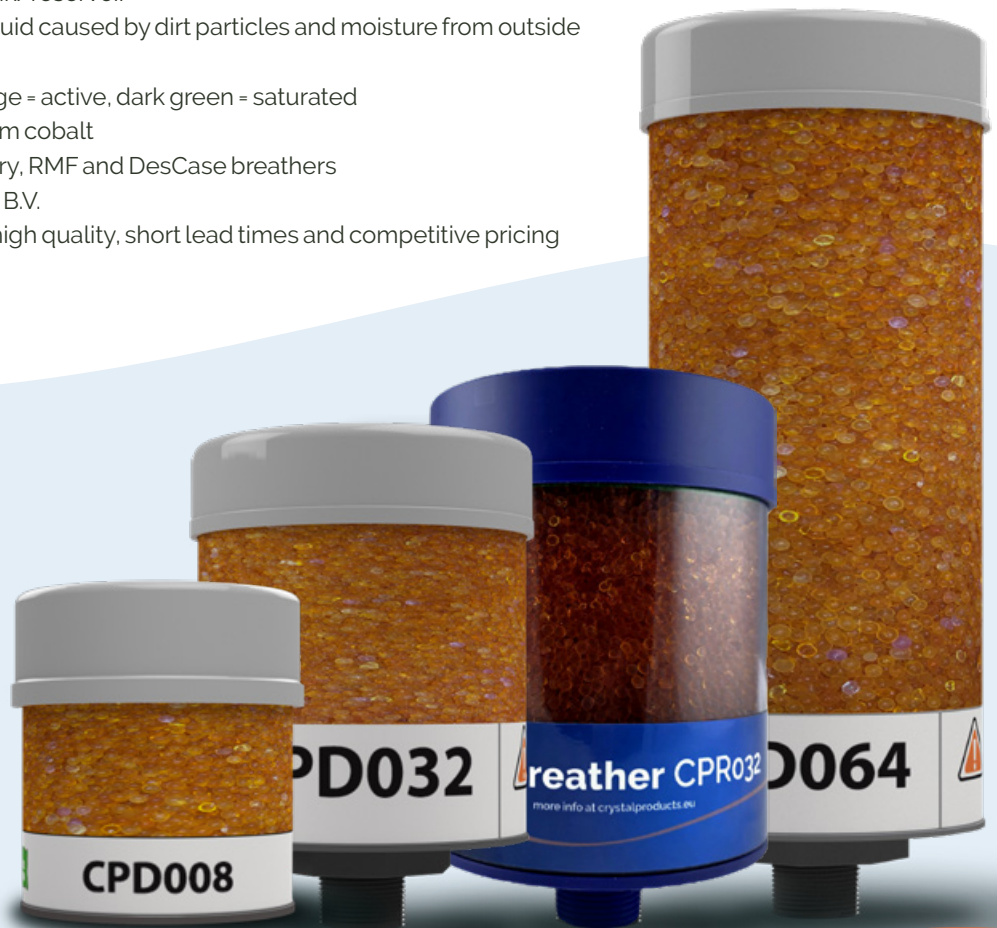
Advantages

- Combines dirt and moisture prevention
- Prevents corrosion inside the tank/reservoir
- Prevents chemical reactions in fluid caused by dirt particles and moisture from outside
- Lowers maintenance costs
- Clear saturation indication: orange = active, dark green = saturated
- Uses non-toxic sillicagel free from cobalt
- Replaces many types of Air Sentry, RMF and DesCase breathers
- Made in the Netherlands at TRIS B.V.
- Controlled production ensures high quality, short lead times and competitive pricing

This is how it works



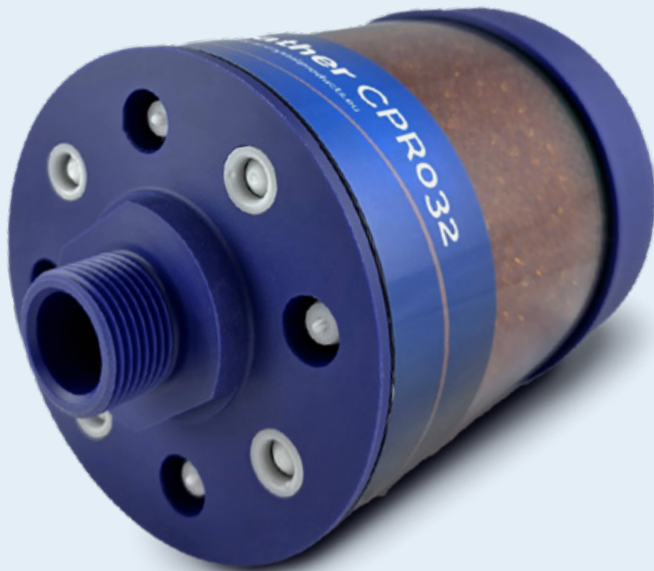
more info at crystalproducts.eu



Breather: CPD series

Characteristics	CPD008 for limited space	CPD032 standard highly flexible	CPR032 standard highly flexible	CPD064 high water removal capacity
Article number	CP-D-008	CP-D032	CP-R-032	CP-D-064
Material	Synthetic material	Synthetic material	Polypropylene & PVC	Synthetic material
Breather type	Disposable	Disposable	Refillable	Disposable
Toxic absorption material*	No	No	No	No
Nominal flow	≈ 285 l/minute	≈ 550 l/minute	≈ 550 l/minute	≈ 550 l/minute
Working temperature	-20°C / +70°C	-20°C / +70°C	-20°C / +70°C	-20°C / +70°C
Air filter	≈ 3μ	≈ 3μ	≈ 3μ	≈ 3μ
Hygroscopic material	Silica orange to green	Silica orange to green	Silica orange to green	Silica orange to green
Dimensions & weight	ø77 x 85mm 300 g	ø132 x 160mm 1,500g	ø132 x 160mm 1,500 g	ø132 x 305mm 2,900 g
Water absorbing capacity	≈80ml	≈ 320 ml	≈ 320 ml	≈ 640ml
Silicagel content	≈150g	≈ 950 g	≈ 1600 g	≈ 1,900 g
Connection	0,5 inch female	1,0 inch male	1,0 inch male	1,0 inch male

* SDS available, Crystal Products uses silicagel that does not contain cobalt.



Example applications

- Injection moulding machines
- Presses and metal working machines
- Hydraulic installations that are equipped with proportional- or servovalves
- Gearboxes
- Storage tanks
- Other (critical) installations

